



Hepworth Court, 30 Gatliff Road  
London SW1W

GARTON JONES.COM

# Hepworth Court, 30 Gatliff Road London, SW1W

## £1,250,000 Leasehold

## GARTON JONES.COM

8 Gatliff Road  
Grosvenor  
Waterside  
Chelsea  
London  
SW1W 8DP

Sales +44 (0) 20 7730 5007  
gws@gartonjones.com  
www.gartonjones.com

A TWO bedroom apartment for sale of approx. 690 sq.ft (64.12 sq.m) in Hepworth Court, Grosvenor Waterside development in Chelsea that surrounds the historic Grosvenor Dock. This bright apartment has an open plan reception room, kitchen with integrated appliances, en-suite bathroom plus en-suite shower room. There is a full width south easterly facing private balcony overlooking the dock. There is comfort cooling and good storage including a utility cupboard housing a washer/dryer and built in wardrobes to the master bedroom. Residents have the use of 24-HOUR CONCIERGE, GYM & SPA. On-site Sainsbury's Local, crèche, coffee shop and Purple Dragon private kids club. SLOANE SQUARE & VICTORIA station with Gatwick Express are within walking distance and Battersea Park is just a short walk away across Chelsea Bridge.

Available via Garton Jones' on-site office at Grosvenor Waterside (underneath Bramah House).

Council Tax: Westminster City Council (band F)

EPC Rating: C (77)

Service Charges: approx. £7,500.00 per annum  
Ground Rent: £1,324.29 per annum- January 2026- December 2026

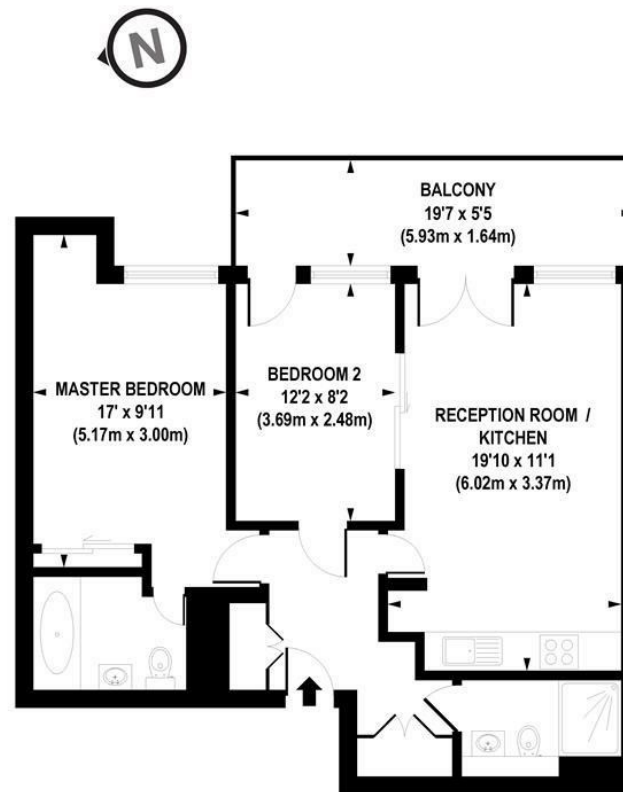
Leasehold 999 years from 2003

EWS1 compliant

EPC certificate available on request.

- 690 Sq.ft (64.12 Sq.m)
- 2 Bedroom Apartment
- Open Plan Reception Room
- Kitchen With Integrated Appliances
- En-Suite Bathroom Plus En-Suite Shower Room
- Full Width Balcony Overlooking The Historic Grosvenor Dock
- 24 Hour Concierge Service
- Recently Re-Decorated With New Carpets & Freshly Sanded Wood Flooring
- Close To Victoria Station & Sloane Square
- On-Site Residents' Gym, Spa, Purple Dragon Kids' Club, Creche & Sainsbury's Local & Coffee Shop





APPROX. GROSS INTERNAL FLOOR AREA 690 sq. ft / 64.12 sq. m

Floorplan is for illustrative purposes only and is not to scale.  
Every attempt has been made to ensure the accuracy of the floorplan shown, however all measurements,  
fixtures, fittings and data shown are an approximate interpretation for illustrative purposes only.  
Liability for errors, omissions or mis-statement through negligence or otherwise is hereby excluded.

**CP CREATIVE**  
PROPERTY MARKETING

